

Think of an instance in which an adult, such as a parent or teacher, gave you a direction or an order. In the box below, write a few lines of dialogue to show what you were told and what your responses were.

| |
|--------|
| Adult: |
| |
| You: |
| |
| Adult: |
| |
| You: |
| |
| Adult: |
| |
| You: |
| |

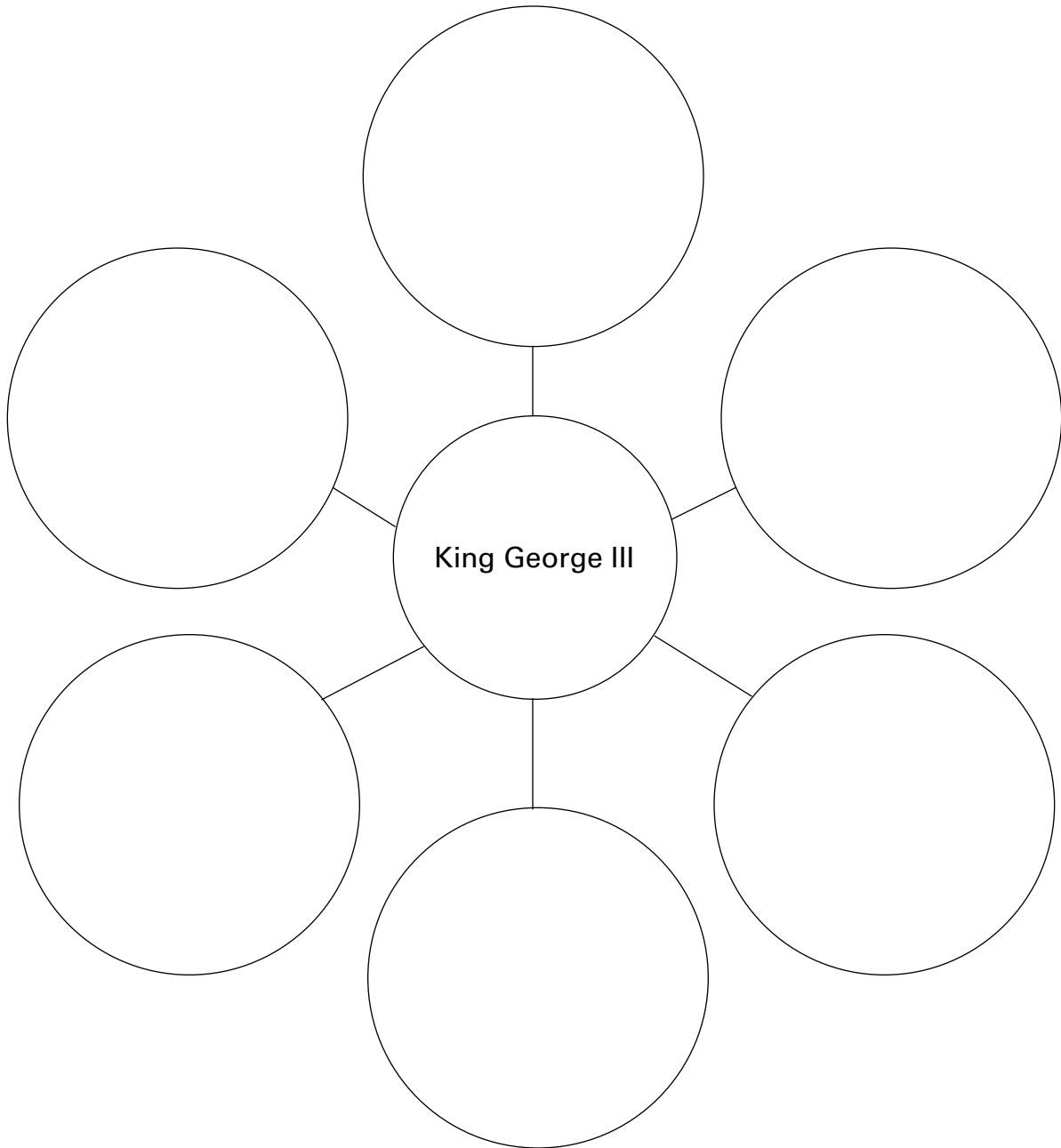
Role-play this conversation with a partner.

Read Sections 3 through 8 in your Student Edition. Then match an illustration from the Student Handout with the historical event described in each section. Glue the image in the correct place. Then write notes comparing the illustration with the matching historical event.

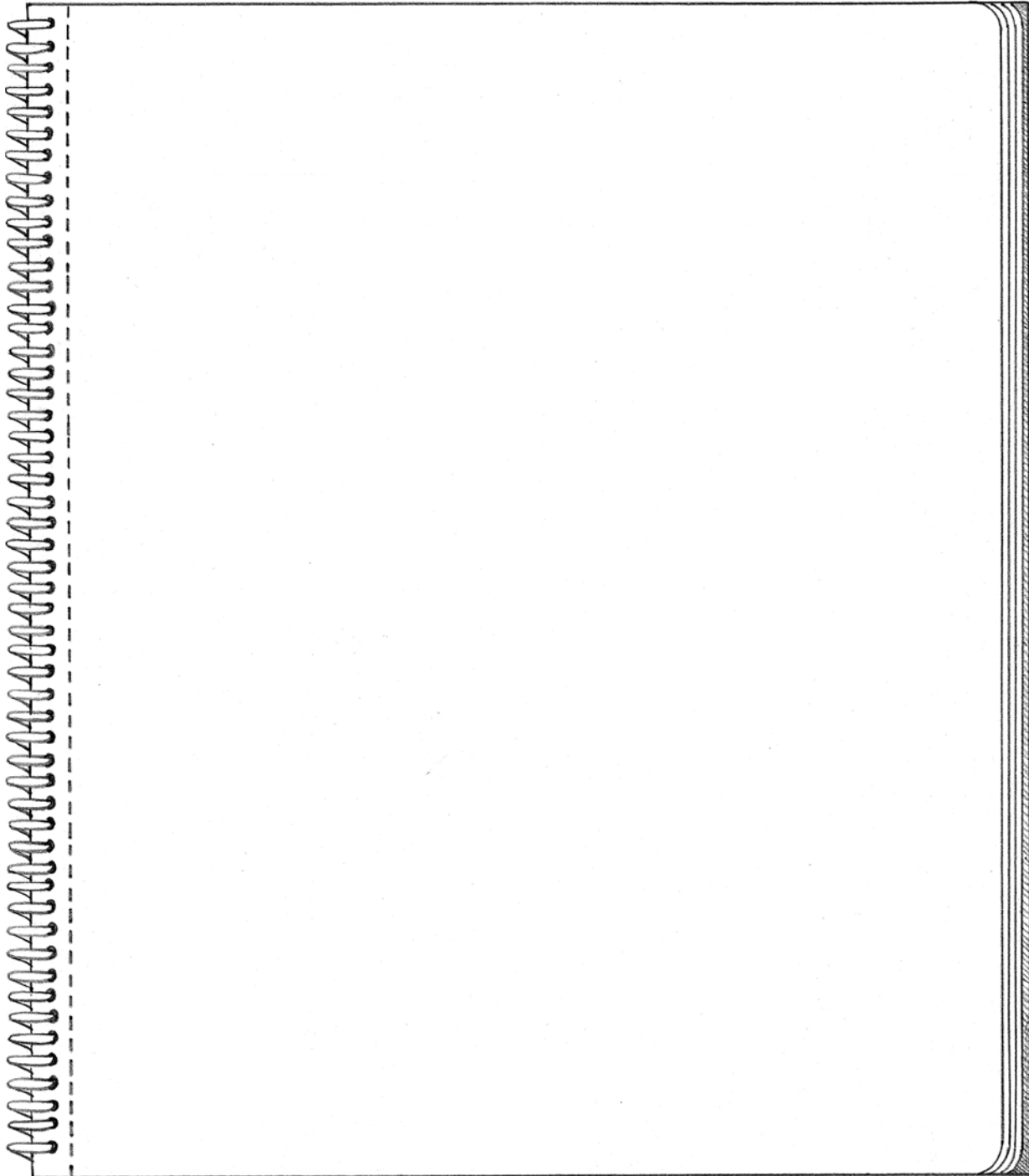
| | | |
|--|---|--------------------------|
| <p>The Proclamation of 1763</p> | <p>In Metaphor</p> <p>The parent is concerned about her child's safety.</p> <p>The parent forbids the child to leave the yard.</p> | <p>In History</p> |
| <p>The Quartering Act</p> | <p>In Metaphor</p> <p>The parent hires a babysitter to watch the child.</p> <p>The child does not like serving the babysitter.</p> | <p>In History</p> |
| <p>The Stamp Act</p> | <p>In Metaphor</p> <p>The parent requires the child to pay for telephone use.</p> <p>The child is upset about this new rule.</p> | <p>In History</p> |

| | | |
|------------------------------------|---|--------------------------|
| <p>The Boston Massacre</p> | <p>In Metaphor</p> <p>The child and the babysitter argue.</p> <p>The child is punished for arguing.</p> | <p>In History</p> |
| <p>The Boston Tea Party</p> | <p>In Metaphor</p> <p>The child does not like being forced to drink milk.</p> <p>The child pours the milk into the sink.</p> | <p>In History</p> |
| <p>The Intolerable Acts</p> | <p>In Metaphor</p> <p>The parent restricts the child to his bedroom.</p> <p>The child is angry and defiant.</p> | <p>In History</p> |

After you have read the Reading Further section in your Student Edition, think of words or phrases you would use to describe King George III. Place one word or phrase in each empty circle below.

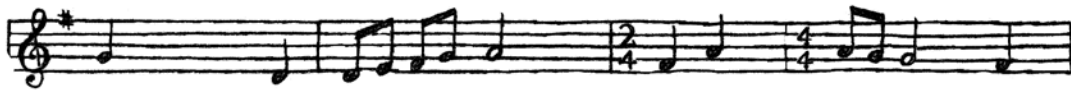


Review the words and phrases you have used to describe King George III. Think about how the history of the colonies was affected by the kind of man he was. Now write a short story telling what might have happened if King George had had a different point of view about the colonies. Identify some other personality traits and attitudes he might have had, and describe how these could have changed history. Explain how some of the actual historical events might have been altered.



Write a new verse (set of lines) for the song “The Mother Country” to come after the verse printed below. Your verse should include the following:

- three lines that accurately describe an event that led to tensions between Britain and the colonies
- the metaphor of a mother-child relationship
- a rhyming pattern like that in the original lines
- writing that is free from spelling and grammatical errors



*We have an old Mother that peevish is grown,
 She snubs us like Children that scarce walk alone;
 She forgets we're grown up and have Sense of our own.*

